

No Ordinary Ornament

Have yourself a shadow box Christmas

By Carolyn Hasenfratz

Santa has a special surprise this year: a shadow box ornament featuring himself. Or a raven or Queen Victoria. Yes, the supply list is pretty extensive and there are a lot of steps, but when you're finished, you'll have an heirloom quality ornament that is likely to be treasured for decades.

You will be working in a start-and-stop fashion to allow time for glue and paint to dry in between steps, so you might want to work in an assembly-line fashion and make several parts in each step to create multiple ornaments.

Steps for Making Your Ornament

1. Download the PDF document Shadow Box Ornament Template

from the RSM website (www.rsmadness.com) and print it out. Or cut out the templates shown here and enlarge them 200%.

2. Look at the frame piece in the template on the next page. Cut out two pieces of 3" x 4" scrap chipboard, and one piece of 2" x 3" scrap chipboard. Center the smaller chipboard piece inside one of the larger ones and outline with pencil. This will be your line to cut out the middle to make a frame. Make a similar line on the other 3" x 4" piece.

3. Using your craft/hobby knife, cutting mat and metal ruler, cut out the middles of both 3" x 4" chipboard pieces. You should end up with two 3" x 4" frames with openings in them that measure 2" x 3".

4. One of the resulting frames will be used as part of your finished ornament. Paint this silver and set it



SANTA'S SELFIE AND RAVEN

(Stamp credits: Santa—Viva Las VegaStamps!; bird—Carolyn's Stamp Store; frame and others—unknown.)



Tools and Supplies

Shadow Box Ornament Template
(Download at rsmadness.com
or copy the one here, enlarge
200%.)

Scrap chipboard

Self-healing cutting mat

Metal ruler

Pencil

Craft/hobby knife

Scrap paper

Rubber stamps

Inexpensive black dye-based ink pad

Black permanent ink pad (StazOn
or StampEZ)

Assorted light-weight art papers

Yes Stickflat Glue

Tool for spreading glue—old credit
card, mat board pieces, small
brush, etc.

Tracing paper

Tape (repositionable)

Aleene's Turbo Tacky Glue

Acrylic paint, including metallic silver
and gold, plus brushes

Scoring tool of your choice

Clear acetate

Permanent marker that writes on
acetate

Awl or needle tool

Gold colored chain for hanging

Gold colored wire

Round-nose pliers

Wire cutter

Hole punch

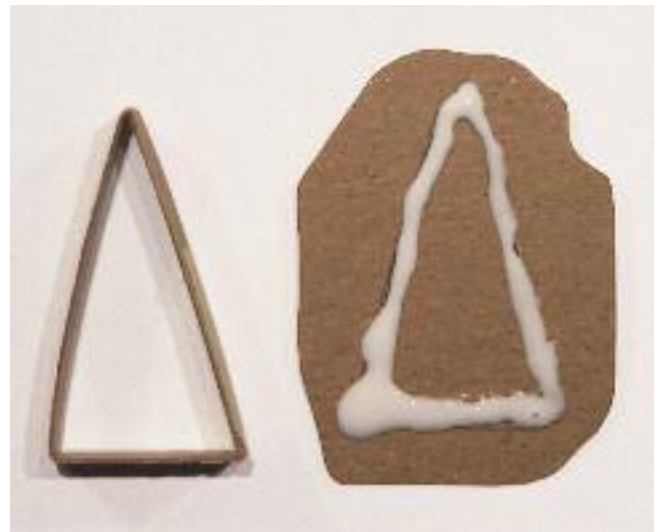
2 gold jump rings

Optional: small clips, Gold StazOn
ink or other ink that stamps on
acetate, small faux jewels



Step 3

Cut out the middle of both 3" x 4" chipboard pieces



Step 10

Glue 1/4" strips to the gold-painted chipboard

aside to dry.

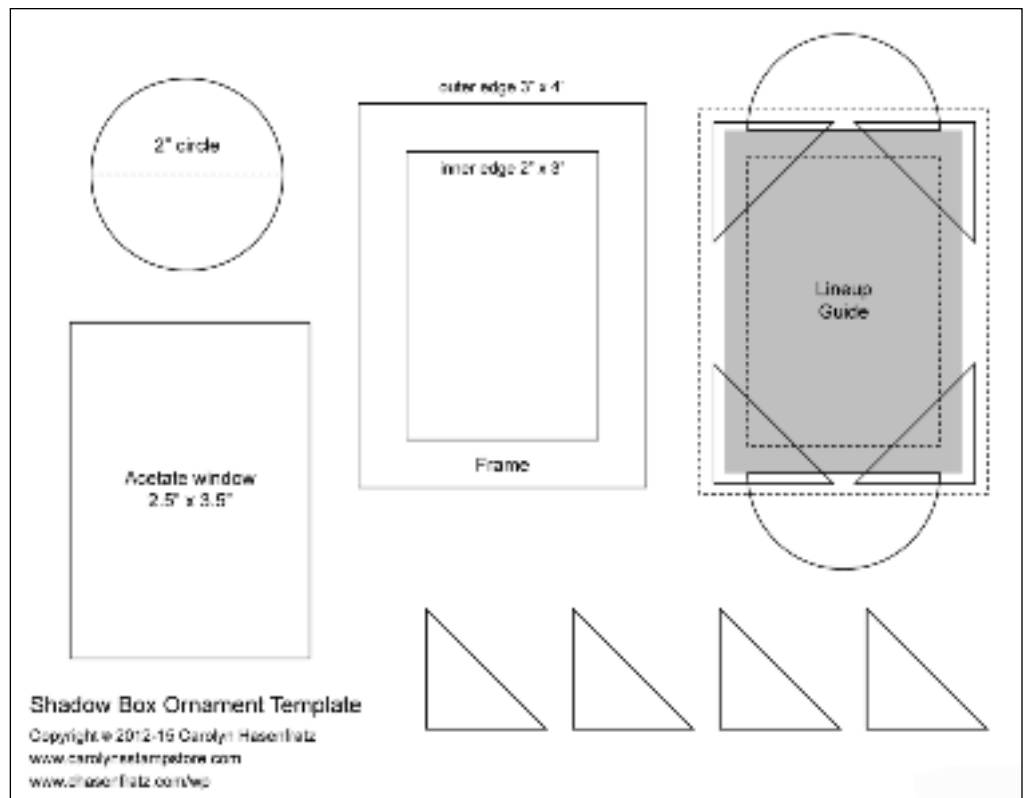
5. Paint some more scrap chipboard metallic gold and let it dry. Be sure to paint enough for the four triangles and two half-circles that are added to each frame.

6. The other unpainted frame will be used as a design aid. You can keep this one undecorated. In this step you'll be choosing what goes inside your shadow box. Take some scrap paper and with a pencil trace the inside edge of your undecorated frame to make a series of 2" x 3" rectangles on the paper.

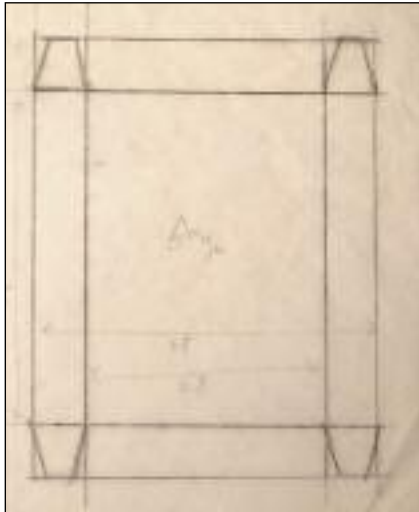
7. Go through your stamp collection and pick out images that would look good inside your shadow box. Pick stamps with a holiday theme to make a seasonal ornament or use other imagery for an ornament that is not specific to any occasion.

Stamp your images in the rectangles with dye-

based black ink to see if they are the right size and look good in the frame. You can also experiment—for example, you might want more than one stamped image in the frame.

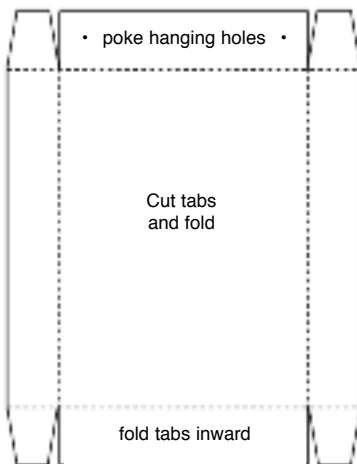


Shadow box ornaments are fun to make. And they make great gifts. All sorts of seasonal designs can be incorporated into these stellar projects.



Step 12

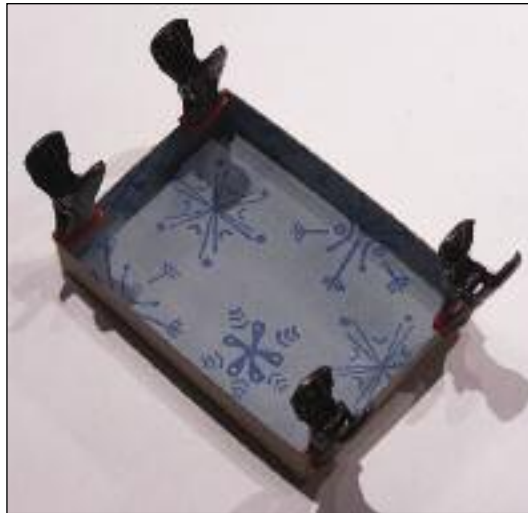
Make a tracing of the Box Section diagram (shown below). Start with a rectangle 3.5" x 4.5".



8. Decide what your final choice or choices will be and stamp the images in black permanent ink on good paper. If you want to embellish your image further with markers or other colors, go ahead. Let these pieces dry.

9. Cut out the images you stamped in Step 7. Glue them down on the gold-painted chipboard with Yes Stickflat Glue. Let dry and cut around the pieces leaving about a 1/8" border around your stamped elements. Trim to fit in the frame if needed.

10. Cut some strips of chipboard that are 1/4" wide. Turn your composition over and bend and cut strips to



Step 13

Fold tabs in, putting Tacky Glue on each tab. Hold in place with small clips or tape until dry.

support your composition from the back. Mark where the strips will go with pencil, then put down some Tacky Glue over the line. Tape the strips in place and set aside to dry.

11. Now it's time to make a background. Cut out a 3.5" x 4.5" piece of chipboard and decorate it to set off your stamped images. You can paint the chipboard and stamp on it, glue on a piece of decorated paper, or use any method that you like. Let dry.

12. Refer to the Box Section of the Shadow Box Ornament Template. With tracing paper and a pencil, make a tracing of the diagram that shows how to cut and fold the background piece to make a box.

13. Turn the tracing over and place it on the back of your background piece. Go over the lines again with pencil to transfer. Score the fold lines and cut out the tabs. Fold tabs in, putting Tacky Glue on each tab. Hold in place with small clips or tape until dry.

14. Now it's time to add more decoration to the silver frame you painted earlier. Take some light-colored paper that complements your figures and background and stamp a pattern on it in black permanent ink. After the ink is dry, cut this paper



Step 16

After stamping the frame, stamp the gold triangles with black permanent ink

into 1/4" wide strips. Use these strips to outline the inside edge of the frame, using Yes Stickflat Glue as the adhesive.

15. Next we'll make the triangle elements that go in the corners of the frame. Trace a triangle from the Shadow Box Ornament Template. Cut out four triangles for each frame.

16. Pick out a rubber stamp that looks good stamped in the triangular space. Use the Lineup Guide, if needed, to test the stamps for size. Once



Step 18

Glue the acetate piece to the back of the frame

you've decided what stamp to use, stamp the gold triangles with black permanent ink. When ink is dry, glue them in place on the frame with Yes Stickflat Glue and let the frame dry.

17. Paint the back and sides of the box silver and let it dry.

19. When your box and frame are completely dry, with the frame face down, place the box over the frame and center it. Trace around it with a black permanent marker. This line will help you place the glue later. Turn box and frame right side up and

Visit rsmadness.com and download the ornament templates or copy the ones here and enlarge 200%.

18. Cut out a piece of 2.5" x 3.5" clear acetate. You can use the piece as is, or stamp the corners with metallic permanent ink for extra embellishment. Use your printout of the Lineup Guide to experiment with how to place the stamps if you want to do this. After ink is dry, turn frame over and glue the acetate piece to the back of the frame with Tacky Glue. Set aside to dry, with a weight on top or clipped to keep everything together until it's dry.



Step 20

Attach the hanging chain to the box.

place the frame in place over the box with your figure inside to see how it looks. When you're satisfied with the placement, glue your figure into the box. Let dry.

20. Now we'll attach the hanging chain. Using a needle tool or awl, punch two holes on the top edge of the box. Punch out two circles of chipboard with a hole punch and poke a hole in the middle of each with an awl or needle tool. Cut a piece of gold wire and make a tiny loop at one end. This is to keep the wire from slipping through the hole. Thread the tiny chipboard circle onto the wire. Push the wire through one hole in the box and make another loop on top of the box. Use a jump ring to attach the chain to the loop. Repeat for the other hole.

21. Next cut a 2" circle out of the gold-painted chipboard using the circle the in Shadow Box Ornament Template. Cut the circle in half and stamp a decoration on each half in black permanent ink. Once again, you can use a Lineup Guide from the template as a tester. This allows you to try out stamps on the circle halves before stamping the final version.

22. And now we're ready for the final assembly. Place the frame face down and squeeze out a line of tacky glue where you drew the black line earlier on the frame. Place the box



DON'T LIKE SANTA? HE'S EASILY REPLACED.

(Stamp credits—Queen Victoria—unknown; designs for frames—Carolyn's Stamp Store.)

edge on this line and tape or clip in place. Check to make sure there is a solid line of glue all the way around and squeeze on a little extra if needed to fill in any gaps. Dab a few dots of glue on the front side of the gold half-circles along the straight cut edge and press the half circles face down on the backside of the frame. Tape or clip the two half-circles in place. Let all dry thoroughly.

23. Optional: Attach a self-adhesive faux jewel in each corner of the acetate for extra sparkle.

Carolyn Hasenfratz lives in Brentwood, Missouri. Her blog is chasenfratz.com/wp. Tell her Santa sent you.